



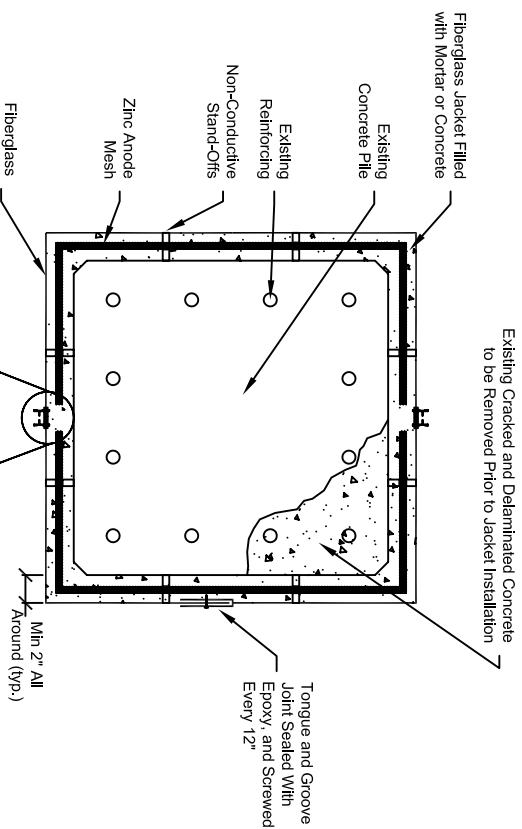
INSTALLATION NOTES:

1. Remove delaminated and unsound concrete.
2. Clean reinforcing steel and any marine growth from concrete to ensure proper bonding.
3. Make electrical connection(s) to reinforcing steel (cathode connection).
4. Install bottom form (available separately).
5. Zinc mesh and FRP jackets may be installed in one or two steps. FRP jackets may be supplied as one piece or two piece jackets. Zinc anode mesh may be supplied in one piece, or in sectional units, depending on jacket dimensions and installation procedures.
6. Seal interlocking joints with epoxy.
7. Install temporary bracing to secure jacket during placement of mortar or concrete.
8. Fill form with mortar or concrete.
9. Remove temporary bracing after sufficient cure time.
10. Complete electrical connections to steel, anode mesh and bulk anode in PVC junction box.
11. Record initial readings as required by the Engineer.

VECTOR GALVANODE NON-ACTIVATED (MARINE) JACKET

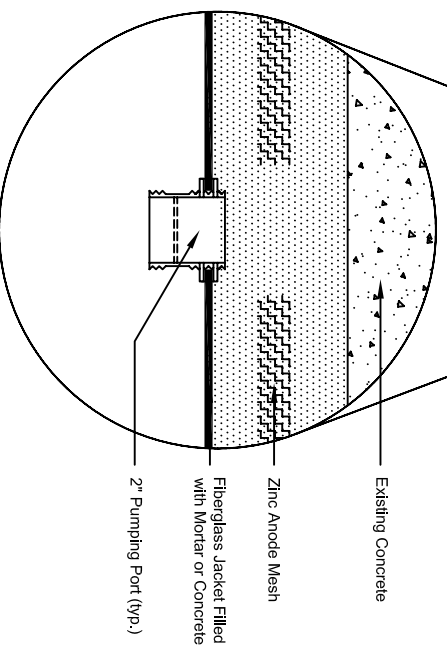
TYPICAL INSTALLATION

Drawn: A.K.H. Date: Jan 2005



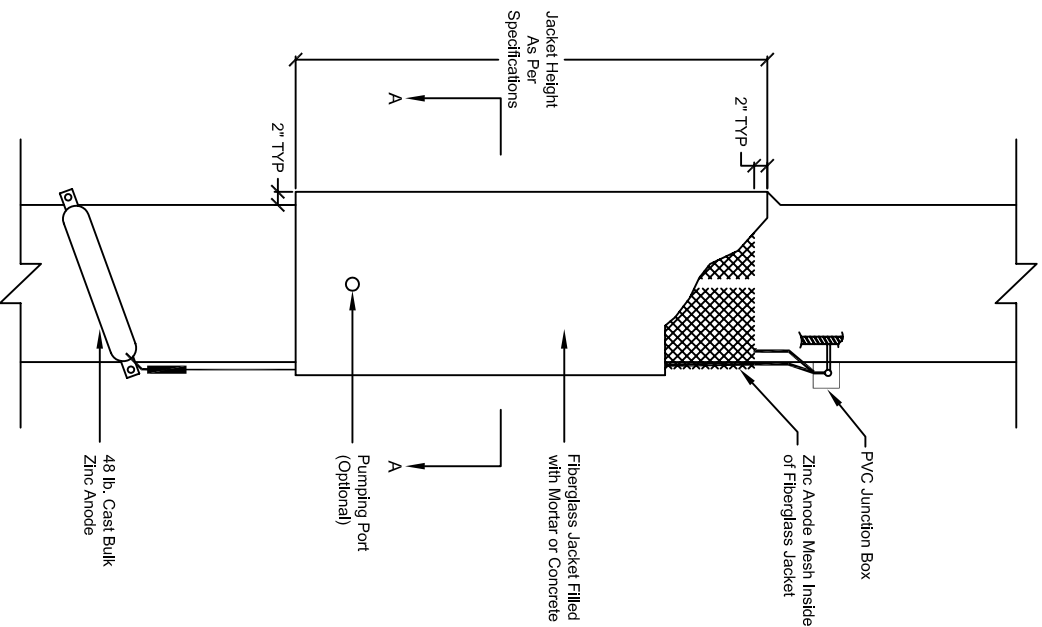
VECTOR GALVANODE JACKET CROSS-SECTION A - A

N.T.S.



VECTOR GALVANODE PUMPING PORT (OPTIONAL)

N.T.S.



VECTOR GALVANODE JACKET ELEVATION

N.T.S.