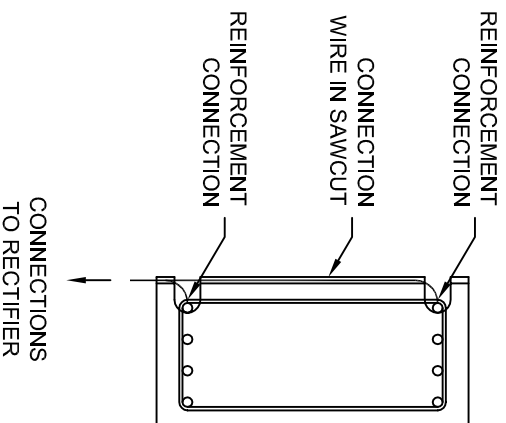
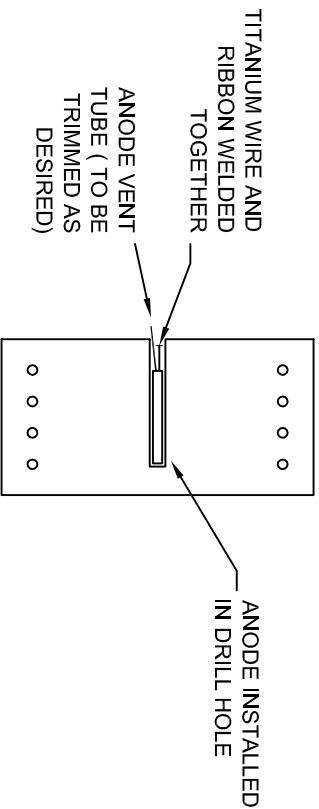


TYPICAL ANODE LAYOUT

N.T.S.



TYPICAL ANODE INSTALLATION AND REINFORCING CONNECTION

N.T.S.



1. Drill or chip holes for reinforcing connections and check continuity of all reinforcing steel.

2. Drill holes for placement of anodes.

3. Sawcut between anodes, rectifier and reinforcing connection for ribbon/wire connection.

4. Install anodes and weld titanium lead wires to titanium ribbon.

5. Grout in anodes, lead wires, ribbon and wires to reinforcing connection.

6. Connect ribbon and reinforcing connection wires to rectifier.

EBONEX

CP 18/180

TYPICAL BEAM
INSTALLATION

Drawn: J.W.H. Date: Mar 2001

SHEET 1 OF 1